

# Fact and Fiction: Challenging the Honest Majority Assumption of Permissionless Blockchains

Runchao Han  
Monash University & CSIRO-Data61  
Melbourne, Australia  
runchao.han@monash.edu

Zhimei Sui  
Monash University  
Melbourne, Australia  
zhimei.sui1@monash.edu

Jiangshan Yu\*  
Monash University  
Melbourne, Australia  
jiangshan.yu@monash.edu

Joseph Liu  
Monash University  
Melbourne, Australia  
joseph.liu@monash.edu

Shiping Chen  
CSIRO-Data61  
Sydney, Australia  
Shiping.Chen@data61.csiro.au

## ABSTRACT

Honest majority is the key security assumption of Proof-of-Work (PoW) based blockchains. However, the recent 51% attacks render this assumption unrealistic in practice. In this paper, we challenge this assumption against rational miners in the PoW-based blockchains in reality. In particular, we show that *the current incentive mechanism may encourage rational miners to launch 51% attacks* in two cases. In the first case, we consider a miner of a stronger blockchain launches 51% attacks on a weaker blockchain, where the two blockchains share the same mining algorithm. In the second case, we consider a miner rents mining power from cloud mining services to launch 51% attacks. As 51% attacks lead to double-spending, the miner can profit from these two attacks. If such double-spending is more profitable than mining, miners are more intended to launch 51% attacks rather than mine honestly.

We formally model such behaviours as a series of actions through a Markov Decision Process. Our results show that, for most mainstream PoW-based blockchains, 51% attacks are feasible and profitable, so profit-driven miners are incentivised to launch 51% attacks to gain extra profit. In addition, we leverage our model to investigate the recent 51% attack on Ethereum Classic (on 07/01/2019), which is suspected to be an incident of 51% attacks. We provide insights on the attacker strategy and expected revenue, and show that the attacker's strategy is near-optimal.

## CCS CONCEPTS

• Security and privacy → Distributed systems security.

## KEYWORDS

Blockchain; Proof-of-Work; 51% Attacks

## 1 INTRODUCTION

Proof-of-work (PoW) based consensus – first introduced by Bitcoin [1] allows distributed participants (aka. nodes) to agree on the same set of transactions. In Bitcoin, all transactions are organised as a *blockchain*, i.e., chain of blocks. Anyone can create a block of transactions, and append it into the Bitcoin blockchain as a unique successor of the last block. To create a block, one needs to solve a computationally hard Proof-of-Work (PoW) puzzle. In PoW, the

puzzle solver (aka. miner) needs to find a nonce to make the hash value of the block smaller than a target value.

The blockchain may have *forks*: miners may create different valid blocks following the same block. In Bitcoin, miners always choose the longest fork of its blockchain in order to agree on a single fork. However, a fork that is currently longer may be reverted by another fork, and all transactions in the currently longer fork will be deemed invalid. This gives the attacker an opportunity to spend a coin in a fork, then creates another longer fork to erase this transaction. This is called *double-spending attack*. To launch a double-spending attack in PoW-based consensus, an attacker should have enough mining power to create a fork growing faster than the current one. This requires the attacker to control a majority of mining power in the network. Double-spending attacks using the majority of mining power is known as *51% attacks*.

**Honest majority.** To avoid 51% attacks, PoW-based consensus should assume the *honest majority*: the majority of mining power in the system follows the protocol. Otherwise, the adversary with the majority of mining power can launch 51% attacks. Such security guarantee depends on the total mining power in the system: with more mining power in the system, controlling the majority of mining power will be more difficult.

**Fact and Fiction.** Ideally, there is only one blockchain in the world, and all miners will participate in this blockchain. This makes controlling 51% mining power extremely difficult. However, there exists numerous PoW-based blockchains [2]. As the total available mining power is shared among different blockchains, no blockchain enjoys the ideal security guarantee, and blockchains with more mining power is more secure than those with less mining power.

The existence of multiple blockchains gives the opportunity to 51% attacks and makes the *honest majority* breakable. As shown in Figure 1, there have been several 51% attacks, causing the loss of more than \$41 million. Most notably, within a month from 29/07/2020 to 29/08/2020, there were three huge 51% attacks on Ethereum Classic (ETC) [4, 5, 6], where the largest one reverted more than 8,000 blocks and caused the loss of \$9.0 million.

**Incentive and rationality.** For better security guarantee, a PoW-based blockchain should attract miners to contribute mining power. To attract miners, PoW-based blockchains usually employ an incentive mechanism, where a miner creating a block will be rewarded for its contribution. Such incentive mechanism makes PoW-based

\*Corresponding author.

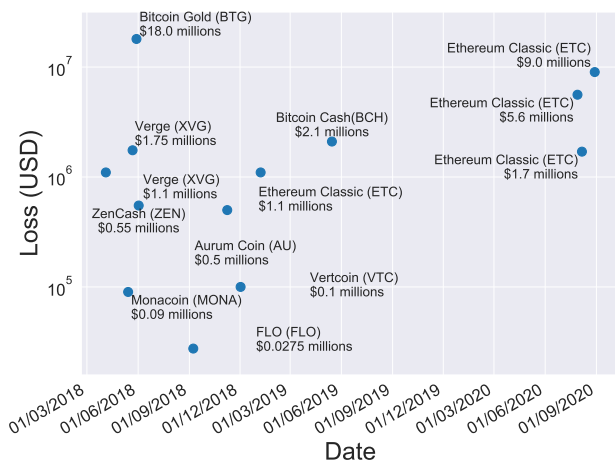


Figure 1: 51% Attacks in 2018-2020[3]. We omit the 51% attack on Litecoin Cash on June 4, 2018 as the loss is unknown.

blockchains to assume miners are *rational* [7], i.e., making decisions for profit. The frequent huge 51% attacks on ETC indicate that, miners’ rational choice may not only be mining honestly, but can also be launching 51% attacks. This leaves us a question that, does the incentive mechanism really encourages miners to mine honestly and secures the blockchain?

### 1.1 Our contributions

While prior research [8, 9, 10, 11, 12, 13, 14, 15, 16, 17, 18, 19] analyse PoW-based blockchains as a stand-alone system, we analyse PoW-based blockchains in the presence of externally available mining resources. We formally analyse two variants of 51% attacks using externally available mining power, and show that 51% attacks are feasible and more profitable than honestly mining for most blockchains. Our analysis leads to two results: 1) the honest majority assumption does not hold for these blockchains, and 2) instead of encouraging miners to mine honestly, the incentive mechanism encourages miners to launch 51% attacks and break “honest majority”. Specifically, we make the following contributions.

**Two 51% attacks.** We consider two variants of 51% attacks that make use of externally available mining power. One is *mining power migration attack*, where the adversary migrates mining power from a stronger blockchain to attack a weaker blockchain. The other is the previously known *cloud mining attack* [20], where the adversary rents mining power from cloud mining services (e.g., Nicehash[21]) to attack a blockchain.

**Formalisation.** Whether these two attacks are feasible or profitable are unknown. Straightforward estimations are coarse-grained so may lead to biased estimations and consequently wrong conclusions. To identify PoW-based consensus’ (overlooked) weaknesses and provide insights and directions towards securing them, we formalise the two 51% attacks using 51-MDP – a MDP-based model extended from Gervais et al. [15]. 51-MDP takes parameters of blockchains and the adversary as input, and outputs the cost and

reward of launching a 51% attack. Of independent interest, 51-MDP can be leveraged to formally study all attacks on PoW-based blockchains while considering external environment.

**Evaluation.** We apply 51-MDP to evaluate two attacks on existing PoW-based blockchains. The results show that for most PoW-based blockchains, launching both 51% attacks is feasible and more profitable than honestly mining. For example, a miner with 12.5% mining power in Bitcoin can profit 6% (\$1,894,650) more than honestly mining Bitcoin by double-spending a transaction of 300,000 BCH (\$37,893,000) on BitcoinCash. The required mining power is not difficult to obtain – at the time of writing, F2Pool controls 17.7% mining power in Bitcoin [22].

**Case study.** We apply 51-MDP to study the 51% attack on ETC happened at 07/01/2019. On 07/01/2019, an anonymous attacker launched a series of 51% attacks and double-spent more than \$1.1 million on a cryptocurrency exchange Gate.io[23]. The attack is suspected to be a *cloud mining attack* using mining power from Nice-hash [24]. We first analyse the pattern of double-spent transactions, and reveal the attacker’s strategy for maximising and stabilising revenue. We then apply 51-MDP to reverse-engineer the attacker’s revenue. The results show that, the attacker is expected to earn \$84773.40, which is close to \$100,000 – the attacker returned to Gate.io later[25]. This indicates the attacker was likely to launch 51% attacks in the fine-grained way described in our paper.

**Countermeasures.** We discuss potential countermeasures of these two 51% attacks derived from our observed insights. For quick remedies, we suggest ways of detecting such 51% attacks, and reacting upon detected 51% attacks. Among these approaches, we use 51-MDP to show that increasing the number of confirmation blocks is the most practical and effective countermeasure, which is also evidenced by the evaluation result of XMR (Figure 5) in §4. The recent recommended update aligns with our suggestions. For long-term remedies, we consider consensus with accumulated reputations as a future work.

### 1.2 Paper organisation

Section 2 and Section 3 present our 51-MDP model and its evaluation results, respectively. Section 4 analyses the feasibility and profitability of the two 51% attacks. Section 5 studies the 51% attack on ETC in 2019. Section 7 discusses potential remedies of our attacks. Section 8 analyses related work. Section 9 concludes the paper. Appendix A summarises less related work. Appendix B provides a study on the optimal strategy of a BTC miner to launch these two attacks on BCH. Appendix C presents all experimental data used in this paper.

## 2 FORMALISATION

We consider two 51% attacks that make use of externally available mining power: *mining power migration attacks* and *cloud mining attacks*. *Mining power migration attacks* use mining power from other blockchains, while *cloud mining attacks* use mining power from cloud mining services. We formally study these two 51% attacks by proposing a Markov Decision Process (MDP)-based model called 51-MDP. 51-MDP takes our defined blockchain parameters as input, and outputs an optimal attack strategy with expected revenue of this attack.

**Table 1: Notations of parameters in 51-MDP.**

Symbol	Definition
$BC_1, BC_2$	The stronger blockchain and the weaker blockchain
$D_1, D_2$	Difficulty of $BC_1$ and $BC_2$
$d$	Fraction of $BC_1$ 's difficulty towards $BC_2$ 's difficulty, i.e., $d = \frac{D_1}{D_2}$
$H_{h,1}, H_{a,1}$	Honest and adversary's mining power on $BC_1$
$H_{h,2}, H_{a,2}$	Honest and adversary's mining power on $BC_2$
$H_a, H_h$	Total honest and adversary's mining power, i.e., $H_a = H_{a,1} + H_{a,2}$ , $H_h = H_{h,1} + H_{h,2}$
$h_1, h_2$	Fraction of the adversary's mining power towards $BC_1$ and $BC_2$ 's honest mining power, respectively, i.e., $h_1 = \frac{H_a}{H_{h,1}}$ and $h_2 = \frac{H_a}{H_{h,2}}$
$R_1, R_2$	Mining reward of a block on $BC_1$ and $BC_2$
$r$	Fraction of $BC_1$ 's mining reward of a block towards $BC_2$ 's, i.e., $r = \frac{R_1}{R_2}$
$v_{tx}$	Amount of the attacking transactions
$\gamma$	Propagation parameter of the adversary
$pr$	Renting price of a mining algorithm
$\beta$	Fraction of migrated mining power by the adversary
$\delta$	Step of adjusting $\beta$
$N_c$	Number of blocks required to confirm a transaction

## 2.1 System model and notations

We assume miners are rational and blockchains may share the same mining algorithm. For simplicity, our model only considers two blockchains  $BC_1$  and  $BC_2$  with the same mining algorithm. Table 1 summarises all notations used in this paper. Let  $D_1$  and  $D_2$  be the difficulties,  $R_1$  and  $R_2$  be the mining rewards of  $BC_1$  and  $BC_2$ , respectively. Let  $d = \frac{D_1}{D_2}$  and  $r = \frac{R_1}{R_2}$ . As 51% attacks (on  $BC_2$ ) are usually completed within a short time period, we assume  $D_1, D_2, R_1$  and  $R_2$  remain stable during the attack.

In a *mining power migration attack*, the adversary migrates its mining power on  $BC_1$  to launch 51% attacks on  $BC_2$ . Let  $H_{a,1}, H_{a,2}$  be the adversary's mining power, and  $H_{h,1}, H_{h,2}$  be the honest mining power on  $BC_1$  and  $BC_2$ , respectively. Let  $H_a = H_{a,1} + H_{a,2}$ ,  $H_h = H_{h,1} + H_{h,2}$ ,  $H_1 = H_{h,1} + H_{a,1}$  and  $H_2 = H_{h,2} + H_{a,2}$ . Let  $\beta = \frac{H_{a,2}}{H_a}$  be the fraction of mining power that the adversary allocates to  $BC_2$ . Let  $h_1 = \frac{H_a}{H_{h,1}}$  and  $h_2 = \frac{H_a}{H_{h,2}}$  be the ratio between the adversary's mining power and the honest mining power on  $BC_1$  and  $BC_2$ , respectively.

In a *cloud mining attack*, the adversary rents mining power to launch 51% attacks on  $BC_2$ . We assume that the adversary has sufficient money for renting mining power that is compatible with the victim blockchain  $BC_2$ , and there exists unlimited rentable mining power from cloud mining services. To keep notations consistent, we denote the rentable mining power as  $H_a$ . Thus,  $h_2 = \frac{H_a}{H_{h,2}}$  is the fraction of rented mining power out of rentable mining power, and  $\beta = \frac{H_{a,2}}{H_a}$  be the fraction of rented mining power out of the rentable

mining power. Let  $pr$  be the price of renting a unit of mining power (e.g. hash per second) for a time unit.

Let  $\gamma \in [0, 1]$  be the adversary's propagation parameter: when there are two simultaneous blocks mined by the adversary and an honest miner,  $\gamma$  of honest miners receive the adversary's block earlier than the honest block. Let  $N_c$  be the required number of blocks for the blockchain network to confirm a transaction.

## 2.2 The 51-MDP model

The 51-MDP model – summarised in Table 2 – describes the attacks as a series of actions performed by an adversary. At any time, the adversary lies in a state, and can perform an action, which transits its state to another state by a certain probability. For each state transition, the adversary may get some reward or penalty. Formally, our 51-MDP model is a four-element tuple  $(S, A, P, R)$  where  $S$  is the state space containing all possible states of an adversary;  $A$  is the action space containing all possible actions performed by an adversary;  $P$  is the stochastic transition matrix presenting the probabilities of all state transitions; and  $R$  is the reward matrix presenting the rewards of all state transitions.

**State space**  $S$  consists of four dimensions  $(l_h, l_a, \beta, fork)$ . Parameters  $l_h$  and  $l_a$  are the length of the honest and the adversary's forks on  $BC_2$ , respectively. Eventually, nodes will agree on only one of these two forks. Let  $\beta \in [0, 1]$  be the ratio of mining power allocated on  $BC_2$  out of the adversary's total mining power, and  $\delta \in [0, 1]$  be the step of adjusting  $\beta$ . We denote the state of the adversary's fork as *fork*, which has three possible values.

- **Relevant** ( $fork = r$ ) means the adversary's fork is published but the honest blockchain is confirmed by the network. This indicates that the attack is unsuccessful at present. (Note that the adversary can keep trying and may succeed in the future.)
- **Irrelevant** ( $fork = ir$ ) means the adversary's fork is published and confirmed in network. This indicates a successful attack.
- **Private** ( $fork = p$ ) means the adversary's fork is private and only the adversary is mining on it. This indicates that an attack is in process.

**Action space**  $A$  includes actions that the adversary can perform given a state. The adversary's possible actions include:

- **ADOPT**. The adversary accepts the honest blockchain and discards its fork, which means the adversary aborts its attack.
- **OVERRIDE**. The adversary publishes its fork (which is longer than the honest one). Consequently, the honest blockchain is overridden, and the payment transaction from the adversary is successfully reverted.
- **MATCH**. The adversary publishes its fork with the same length as the honest blockchain.
- **WAIT**. The adversary keeps mining on its fork. The adversary can perform **WAIT** in two scenarios. One is when  $l_h < N_c$ , i.e., the merchant is still waiting for the payment confirmation. The other is when **MATCH** has failed, i.e.,  $N_c < l_a \leq l_h$  but the adversary does not give up its fork.

When performing **MATCH** and **WAIT**, the adversary can adjust mining power allocated to  $BC_2$ . We denote two variants of **MATCH**

Table 2: State transitions and reward matrices of 51-MDP.

State $\times$ Action	Resulting State	Probability	Reward				Condition
			$\mathbb{R}_{migration}^-$	$\mathbb{R}_{cloud}^-$	$\mathbb{R}_{mine}$	$\mathbb{R}_{tx}$	
$(l_h, l_a, \beta, fork), ADOPT$	$(0, 0, \beta, ir)$	1	0	0	0	0	$l_h > l_a \geq N_c$
$(l_h, l_a, \beta, fork), OVERRIDE$	$(0, 0, \beta, ir)$	1	0	0	$l_a R_2$	$v_{tx}$	$l_a > l_h \geq N_c$
$(l_h, l_a, \beta, fork), WAIT$	$(l_h, l_a + 1, \beta, p)$	$\frac{\beta h_2}{\beta h_2 + 1}$	$\frac{-\beta h_2 R_1}{d(1+\beta h_2)}$	$\frac{-\beta h_2 D_2 pr}{1+\beta h_2}$	0	0	$l_h < N_c$
	$(l_h + 1, l_a, \beta, p)$	$\frac{1}{\beta h_2 + 1}$	$\frac{-\beta h_2 R_1}{d(1+\beta h_2)}$	$\frac{-\beta h_2 D_2 pr}{1+\beta h_2}$	0	0	$l_h < N_c$
$(l_h, l_a, \beta, fork), WAIT\_INC$	$(l_h, l_a + 1, \beta + \delta, p)$	$\frac{(\beta + \delta) h_2}{(\beta + \delta) h_2 + 1}$	$\frac{-(\beta + \delta) h_2 R_1}{d(1+(\beta + \delta) h_2)}$	$\frac{-(\beta + \delta) h_2 D_2 pr}{1+(\beta + \delta) h_2}$	0	0	$l_h < N_c$
	$(l_h + 1, l_a, \beta + \delta, p)$	$\frac{1}{(\beta + \delta) h_2 + 1}$	$\frac{-(\beta + \delta) h_2 R_1}{d(1+(\beta + \delta) h_2)}$	$\frac{-(\beta + \delta) h_2 D_2 pr}{1+(\beta + \delta) h_2}$	0	0	$l_h < N_c$
$(l_h, l_a, \beta, fork), WAIT\_DEC$	$(l_h, l_a + 1, \beta - \delta, p)$	$\frac{(\beta - \delta) h_2}{(\beta - \delta) h_2 + 1}$	$\frac{-(\beta - \delta) h_2 R_1}{d(1+(\beta - \delta) h_2)}$	$\frac{-(\beta - \delta) h_2 D_2 pr}{1+(\beta - \delta) h_2}$	0	0	$l_h < N_c$
	$(l_h + 1, l_a, \beta - \delta, p)$	$\frac{1}{(\beta - \delta) h_2 + 1}$	$\frac{-(\beta - \delta) h_2 R_1}{d(1+(\beta - \delta) h_2)}$	$\frac{-(\beta - \delta) h_2 D_2 pr}{1+(\beta - \delta) h_2}$	0	0	$l_h < N_c$
$(l_h, l_a, \beta, fork), MATCH$	$(l_h, l_a + 1, \beta, ir)$	$\frac{\beta h_2}{\beta h_2 + 1}$	$\frac{-\beta h_2 R_1}{d(1+\beta h_2)}$	$\frac{-\beta h_2 D_2 pr}{1+\beta h_2}$	$\frac{(l_a + 1) R_2 \beta h_2}{\beta h_2 + \gamma}$	$v_{tx}$	$l_h = l_a \geq N_c$
	$(l_h + 1, l_a, \beta, r)$	$\frac{1 - \gamma}{\beta h_2 + 1}$	$\frac{-\beta h_2 R_1}{d(1+\beta h_2)}$	$\frac{-\beta h_2 D_2 pr}{1+\beta h_2}$	0	0	$l_h = l_a \geq N_c$
$(l_h, l_a, \beta, fork), MATCH\_INC$	$(l_h, l_a + 1, \beta + \delta, ir)$	$\frac{(\beta + \delta) h_2 + \gamma}{(\beta + \delta) h_2 + 1}$	$\frac{-(\beta + \delta) h_2 R_1}{d(1+(\beta + \delta) h_2)}$	$\frac{-(\beta + \delta) h_2 D_2 pr}{1+(\beta + \delta) h_2}$	$\frac{(l_a + 1) R_2 (\beta + \delta) h_2}{(\beta + \delta) h_2 + \gamma}$	$v_{tx}$	$l_h = l_a \geq N_c$
	$(l_h + 1, l_a, \beta + \delta, r)$	$\frac{1 - \gamma}{(\beta + \delta) h_2 + 1}$	$\frac{-(\beta + \delta) h_2 R_1}{d(1+(\beta + \delta) h_2)}$	$\frac{-(\beta + \delta) h_2 D_2 pr}{1+(\beta + \delta) h_2}$	0	0	$l_h = l_a \geq N_c$
$(l_h, l_a, \beta, fork), MATCH\_DEC$	$(l_h, l_a + 1, \beta - \delta, ir)$	$\frac{(\beta - \delta) h_2 + \gamma}{(\beta - \delta) h_2 + 1}$	$\frac{-(\beta - \delta) h_2 R_1}{d(1+(\beta - \delta) h_2)}$	$\frac{-(\beta - \delta) h_2 D_2 pr}{1+(\beta - \delta) h_2}$	$\frac{(l_a + 1) R_2 (\beta - \delta) h_2}{(\beta - \delta) h_2 + \gamma}$	$v_{tx}$	$l_h = l_a \geq N_c$
	$(l_h + 1, l_a, \beta - \delta, r)$	$\frac{1 - \gamma}{(\beta - \delta) h_2 + 1}$	$\frac{-(\beta - \delta) h_2 R_1}{d(1+(\beta - \delta) h_2)}$	$\frac{-(\beta - \delta) h_2 D_2 pr}{1+(\beta - \delta) h_2}$	0	0	$l_h = l_a \geq N_c$

as **MATCH\_INC** and **MATCH\_DEC**, where the adversary adds and reduces  $\delta h_2$  mining power allocated to  $BC_2$ , i.e.,  $\beta \mapsto \{\beta + \delta, \beta - \delta\}$ , respectively. Similarly, we denote two variants of **WAIT** as **WAIT\_INC** and **WAIT\_DEC**.

**State Transition Matrix**  $P$  is defined as a 3-dimensional matrix  $S \times A \times S : Pr(s, a \mapsto s')$ , where  $S$  is the state space, and  $A$  is the action space. Each point  $(s, a, s')$  means that, the participant at state  $s \in S$  performs the action  $a \in A$  to transit its state to  $s' \in S$  with probability  $Pr(s, a \mapsto s')$ . An action  $a$  transits a state  $s$  to one of multiple possible states  $s'_1, s'_2, \dots, s'_n$  with probability  $Pr(s, a \mapsto s'_i)$ , where  $\sum_{i=1}^n Pr(s, a \mapsto s'_i) = 1$ .

When  $a = \mathbf{WAIT}[\mathbf{INC}, \mathbf{DEC}]$ , the adversary is mining its fork alone, until either the honest miners or the adversary mine a new block. The probability of  $l_a \mapsto l_a + 1$  (i.e., the adversary mines the next block) and  $l_h \mapsto l_h + 1$  (i.e., the honest miners mine the next block) are

$$P(l_a \mapsto l_a + 1) = \frac{H_{a,2}}{H_{a,2} + H_{h,2}} = \frac{\beta H_a}{\beta H_a + H_{h,2}} = \frac{\beta h_2}{\beta h_2 + 1} \quad (1)$$

$$P(l_h \mapsto l_h + 1) = 1 - P(l_a \mapsto l_a + 1) = \frac{1}{\beta h_2 + 1} \quad (2)$$

When  $a = \mathbf{MATCH}[\mathbf{INC}, \mathbf{DEC}]$ , the adversary tries to overtake the honest fork once  $l_a \geq N_c$  and  $l_a = l_h$ . Besides the adversary's mining power, the eclipsed mining power of  $\gamma H_{h,1}$  mines on the adversary's blockchain after **MATCH**. Therefore, the possibility of  $l_a \mapsto l_a + 1$  and  $l_h \mapsto l_h + 1$  becomes

$$P(l_a \mapsto l_a + 1) = \frac{\beta H_a + \gamma H_{a,2}}{\beta H_a + H_{h,2}} = \frac{\beta h_2 + \gamma}{\beta h_2 + 1} \quad (3)$$

$$P(l_h \mapsto l_h + 1) = 1 - P(l_a \mapsto l_a + 1) = \frac{1 - \gamma}{\beta h_2 + 1} \quad (4)$$

**Reward Matrix**  $R$  is defined as  $S \times A \times S : Re(s, a \mapsto s')$ , where the adversary performs action  $a \in A$  which transits the system from state  $s \in S$  to a new state  $s' \in S$  while getting reward  $Re(s, a \mapsto s')$ . The reward is twofold: the reward of mining  $\mathbb{R}_{mine}$  and the reward from the double-spent transactions  $\mathbb{R}_{tx}$ . The adversary also costs some money on the mining power, and we denote the cost as  $\mathbb{R}^-$ . Thus,  $Re(s, a \mapsto s') = \mathbb{R}_{mine} + \mathbb{R}_{tx} - \mathbb{R}^-$ .

$\mathbb{R}_{mine}$ . The adversary receives the block reward  $\mathbb{R}_{mine}$  on  $BC_2$  only when its fork is published and accepted by the honest network. Therefore, only **OVERRIDE** and the winning scenarios of **MATCH[\_INC, \_DEC]** have a positive  $\mathbb{R}_{mine}$ , while  $\mathbb{R}_{mine} = 0$  in other scenarios. When performing **OVERRIDE**, the adversary's blockchain of length  $l_a$  is directly accepted, so  $\mathbb{R}_{mine} = l_a R_2$ . When performing **MATCH[\_INC, \_DEC]**, the adversary needs to win the next block so that its blockchain overrides the honest one, leading to  $\mathbb{R}_{mine} = (l_a + 1) R_2$ .

$\mathbb{R}_{tx}$ . Similar to  $\mathbb{R}_{mine}$ , the adversary receives the double-spent money only when its fork is published and accepted by the honest network. Therefore,  $\mathbb{R}_{tx} = v_{tx}$  for **OVERRIDE** and the winning scenarios of **MATCH**-style actions, while  $\mathbb{R}_{tx} = 0$  for other scenarios.

$\mathbb{R}^-$ . We analyse the cost of mining power migration attacks  $\mathbb{R}_{migration}^-$  and cloud mining attacks  $\mathbb{R}_{cloud}^-$ , separately.  $\mathbb{R}_{migration}^-$  is the loss of block rewards from  $BC_1$  due to the migrated mining power. Consequently, the cost can be computed as the mining reward of the migrated mining power on  $BC_1$  during the time of state transition. For **ADOPT** and **OVERRIDE** actions, state transitions take negligible time. For **WAIT**-style and **MATCH**-style actions, a state transition is triggered by a new block. Therefore,  $\mathbb{R}_{migration}^-$  under **WAIT**-style and **MATCH**-style actions can be calculated as

follows:

$$\mathbb{R}_{migration}^-(l_a \mapsto l_a + 1) = \mathbb{R}_{migration}^-(l_h \mapsto l_h + 1) \quad (5)$$

$$= -\beta H_a \cdot R_1 \cdot \frac{D_2}{H_{h,2} + \beta H_a} \cdot \frac{1}{D_1} \quad (6)$$

$$= \frac{-\beta h_2 R_1}{d(1 + \beta h_2)} \quad (7)$$

$\mathbb{R}_{cloud}^-$  is from renting cloud mining power. The price  $pr$  of renting cloud mining power is quantified as “the price of renting a unit of mining power for a time unit”. Similar with the *mining power migration attack*, only **WAIT**-style and **MATCH**-style actions take a non-negligible time period. Therefore,  $\mathbb{R}_{cloud}^-$  under **WAIT**-style and **MATCH**-style actions can be calculated as follows:

$$R_{BC_1}(l_a \mapsto l_a + 1) = R_{BC_1}(l_h \mapsto l_h + 1) \quad (8)$$

$$= -\beta H_a \cdot Pr \cdot \frac{D_2}{H_{h,2} + \beta H_a} \quad (9)$$

$$= \frac{-\beta h_2 D_2 Pr}{1 + \beta h_2} \quad (10)$$

### 3 MODEL EVALUATION

In order to identify the most important aspects on the profitability of 51% attacks, we use 51-MDP to evaluate our two 51% attacks. Together with public blockchain data, attackers can identify blockchains that are most profitable to attack, and defenders can prepare for potential 51% attacks in advance.

#### 3.1 Experimental methodology.

We implement 51-MDP using Python 2.7 and the *pymdptoolbox* library[26]. We give an upper bound  $limit = 10$  for  $l_a$  and  $l_h$ . We choose  $\delta = 0.2$ , so the value of  $\beta$  can be (0.0, 0.2, 0.4, 0.6, 0.8, 1.0). We apply the *ValueIteration* algorithm [27] with a discount value of 0.9 and an epsilon value of 0.1. We apply this discount value to encourage the adversary to finish the attack in a short time. In practice, the longer time a 51% attack takes, the more risk it will have. For example, shifting mining power to the victim blockchain might be detected by threat intelligence services. We choose a small discount factor to quantify such risk. We omit the evaluation of *cloud mining attacks* as both attacks share the same parameters  $D_2$ ,  $h_2$ ,  $R_2$ ,  $v_{tx}$ ,  $\gamma$  and  $N_c$ .

#### 3.2 Evaluation

We categorise parameters in 51-MDP to five types according to their related aspects: **1)Mining status** which includes two mining difficulties ( $D_1$  and  $D_2$ ) and two ratios of adversary’s mining power ( $h_1$  and  $h_2$ ); **2)Incentive** which includes mining reward ( $R_1$  and  $R_2$ ) and the adversary’s transaction amount  $v_{tx}$ ; **3)Adversary’s network condition** which includes the propagation parameter  $\gamma$  of the adversary; **4)Vigilance of the merchant** which includes the number  $N_c$  of required block confirmations; and **5)Mining power price** which includes  $pr$  only. Figure 2 shows the evaluation results. **Mining status.** Figure 2a shows the impact of mining-related parameters on the adversary’s net revenue. We observe that the net revenue increases monotonically with  $D_2$  decreasing and  $h_2$  increasing. Mining difficulty variation reflects the fluctuation of network mining power. When  $D_2$  decreases, network mining power

decreases, then mining on  $BC_2$  will be easier. Also, launching a 51% attack will be in a lower cost and easier to succeed, which encourages both types of our attacks on  $BC_2$ . By these observations, attackers prefer to invest more computing power to  $BC_2$ , then  $h_2$  increases by migrating attacker’s mining power from other blockchain or renting from cloud services. Therefore, both decreasing  $D_2$  and increasing  $h_2$  incentivise 51% attacks on  $BC_2$ .

**Incentive.** Figure 2b shows the impact of incentive-related parameters on the net revenue. We observe that increasing  $R_2$  and  $v_{tx}$  leads the adversary to profit more. When  $R_2$  increases, mining  $BC_2$  will be more profitable, and 51% attacks on  $BC_2$  will also be more profitable. This encourages both types of 51% attacks on  $BC_2$ . The 51% attack generates  $v_{tx}$  out of thin air, so  $v_{tx}$  is the direct revenue of the 51% attack, and increasing  $v_{tx}$  directly increases the net revenue. Therefore, both increasing  $R_2$  and  $v_{tx}$  incentivise 51% attacks on  $BC_2$ .

**Adversary’s network condition.** Figure 2c shows the impact of  $\gamma$  on the relative revenue. In particular, we can see that the relative reward increases slightly with  $\gamma$  increasing. Interestingly, when the attacker’s propagation parameter  $\gamma = 0.7$ , the curve slope increases.

According to our model,  $\gamma$  counts only when the adversary launches the **MATCH** action. When  $h_2 \geq 1$ , the adversary can always launch the 51% attack, regardless of the reward. Therefore, the **MATCH** action is an infrequent choice compared to **OVER-RIDE**, so the influence of  $\gamma$  is negligible in our case. The slope change is suspected to be when  $\beta H_a + \gamma H_{h,2} \geq (1 - \gamma)H_{h,2}$ . At that point, the allocated mining power from the adversary plus its eclipsed honest mining power outperforms the un-eclipsed honest power. Consequently, the adversary is confident to override the small blockchain by **MATCH** action.

**Vigilance of the merchant.** Figure 2d shows the impact of  $N_c$  on the net revenue. We observe the net revenue decreases monotonically with  $N_c$  increasing, and finally reaches 0. More block confirmations require the adversary to keep mining secretly for a longer time. This leads to a lower probability and greater cost of successful 51% attack through both types of attacks, and discourages 51% attacks on  $BC_2$ .

**Mining power price.** The impact of the mining power price  $pr$  is shown in Figure 2e. We observe that the net revenue decreases sharply with  $pr$  increasing, and finally reaches 0. When the price of renting mining power is low, the related blockchains are vulnerable to the cloud mining attack as the attack cost is also low. Increasing  $pr$  leads to the greater cost of launching 51% attack through renting cloud mining power, which will discourage this kind of 51% attacks on  $BC_2$ .

#### 3.3 Analysis

We observe some insights from the results. First, the attacker’s profit is mainly affected by the parameters that are out of the attacker’s control. The only important parameter that the adversary can control is  $v_{tx}$ , which is bound to its budget. Thus, to maximise the profit, an attacker should choose its target carefully. Once choosing the targeted blockchains, the adversary has little control over the attack.

In addition, although either the attackers or the defenders cannot fully control important parameters, monitoring them in real-time

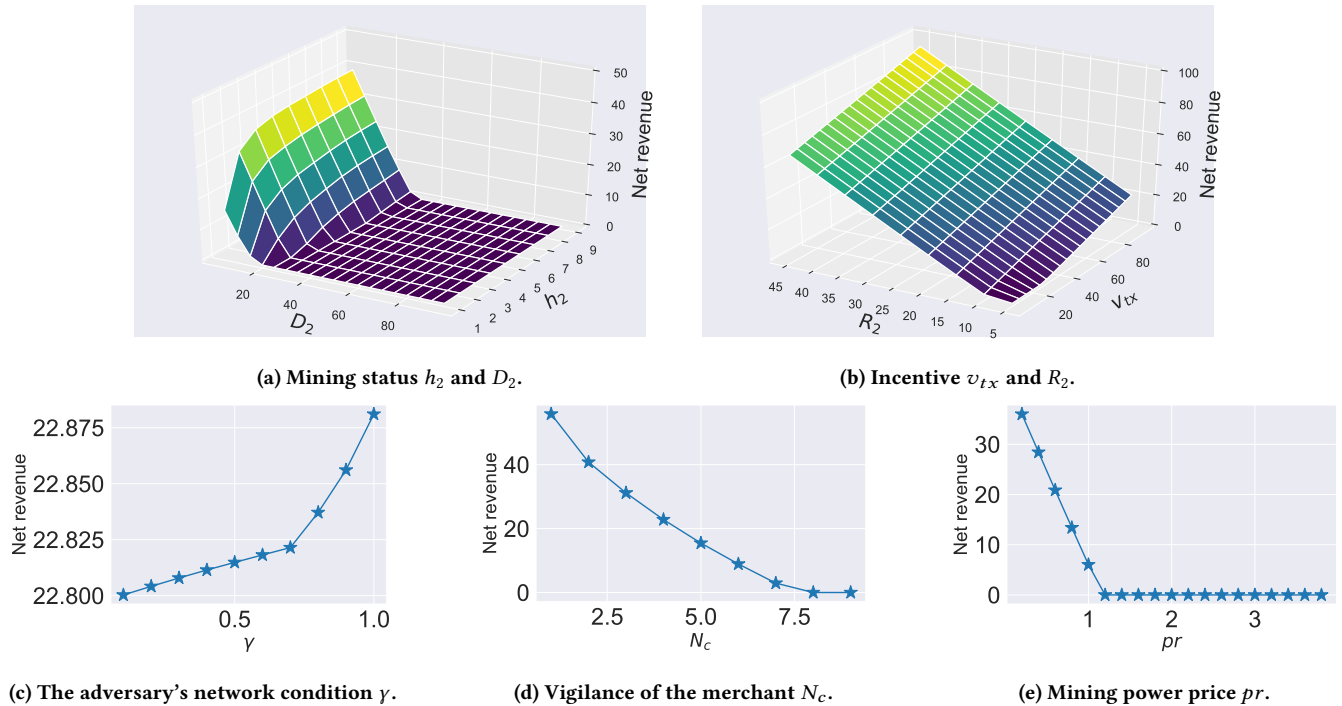


Figure 2: Impacts of parameters on the net revenue of 51% attacks.

is possible. By monitoring these parameters, attackers can identify targets with most expected profit, and defenders (e.g. the cryptocurrency exchanges and the merchants) can be aware of potential attacks then perform countermeasures. For example, one of the effective countermeasures is to increase  $N_c$ , which greatly reduces the attacker’s profit according to Figure 2d. In Appendix 7.1 we analyse concrete countermeasures that defenders can perform.

## 4 EVALUATION OF BLOCKCHAINS IN THE WILD

This section evaluates the security of mainstream PoW-based blockchains against 51% attacks. We evaluate the *mining power migration attack* on 3 pairs of top-ranked blockchains with the same mining algorithm: 1) Bitcoin (BTC) and BitcoinCash (BCH) with Sha256d, 2) Ethereum (ETH) and EthereumClassic (ETC) with Ethash, and 3) Monero(XMR) and ByteCoin (BCN) with CryptoNight. Our evaluation shows that, the *mining power migration attack* is feasible and profitable on BTC/BCH and ETH/ETC, but it is not as effective on XMR/BCN. In addition, we demonstrate an optimal strategy for a BTC miner to launch *mining power migration attacks* on BCH. We present The attack together with explanations and observed insights in Appendix B.

For the *cloud mining attack*, we evaluated the security of ten leading PoW-based blockchains. Our evaluation shows that the *cloud mining attacks* are feasible and profitable on most selected blockchains.

### 4.1 Mining power migration attacks

We evaluate the profitability and feasibility of the mining power migration attack on 3 pairs of top-ranked cryptocurrencies with the same mining algorithm: BTC/BCH, ETH/ETC, and XMR/BCN. By permuting the adversary mining power  $H_a$  and the transaction value  $v_{tx}$ , our experiments reveal their relationship with the relative revenue. As shown in Figure 3, it is easy and profitable for a miner of BTC (or ETH) to launch a 51% attack on BCH (resp. ETC). In particular,

- With approximately 12.5% mining power of BTC (5000E + 15h/s), an adversary can gain 6% (15000 BCH, or \$1,894,650) extra profit (than honest mining) by double-spending a transaction of 300000 BCH (equivalent to \$37,893,000).
- With approximately 11.27% mining power of ETH (16E + 12h/s), the adversary can gain 1.33% (600 ETC, or \$2,556) extra profit by double-spending a transaction of 90000 ETC (equivalent to \$383,400).

The required mining power is not difficult to achieve. The top three mining pools in ETH are Sparkpool (30.9%), Ethermine (23.3%), f2pool2 (10.7%) [22]; and the top three mining pools in BTC are F2Pool (17.7%), Poolin (16.1%), BTC.com (11.9%) [28].

However, for XMR, a miner cannot profit much from the *mining power migration attack*. This is because the total available mining power in Monero is only about 2.8 times of the mining power in the BCN, although their market caps differ greatly. Meanwhile, the total available mining power in BTC is about 27.8 times of the total mining power in BCH; and the total available mining power in ETH is about 16.4 times of the total mining power in ETC.

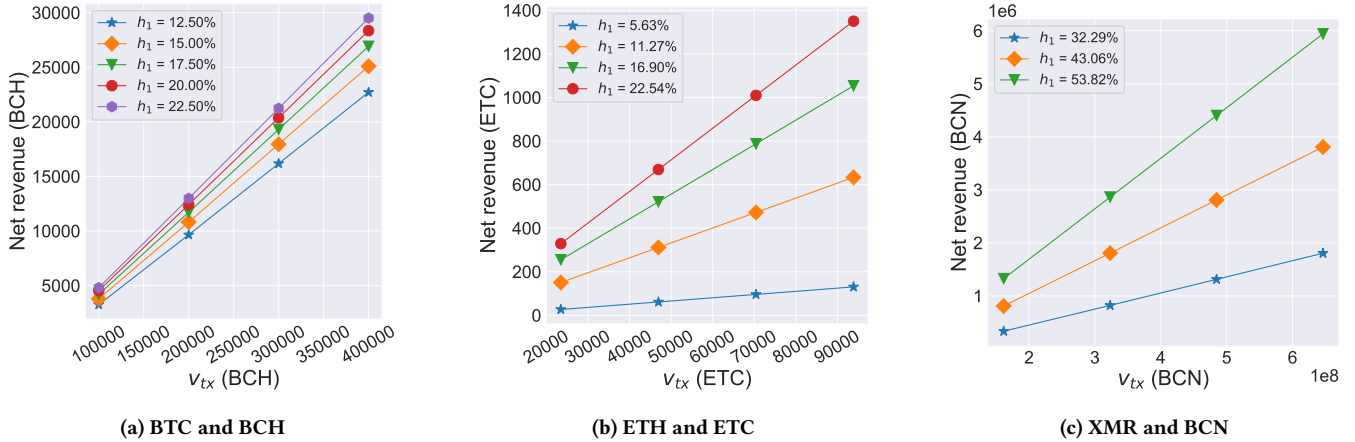


Figure 3: Mining power migration attacks on three different pairs of blockchains. We use  $\gamma = 0.3$  for this group of experiments.

## 4.2 Cloud mining attacks

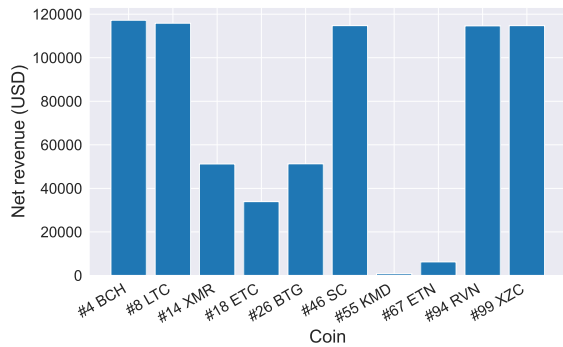


Figure 4: Cloud mining attacks on selected 10 PoW blockchains. We use  $v_{tx} = \$500,000$ ,  $h_2 = 2$  and  $\gamma = 0.3$ . We use the value of  $N_c$  recommended by cryptocurrency communities.

We evaluate ten leading PoW-based blockchains against the *cloud mining attack*. There are 22 PoW-based blockchains in the top 100 blockchains by market cap [2]. DigiByte and Verge use multiple mining algorithms simultaneously, and NiceHash does not support Bytom, ByteCoin, Electroneum, WaltonChain, and Aion. In addition, NiceHash does not have enough mining power to attack BTC with SHA256D, ETH with Ethash, ZEC with Equihash, DOGE with Scrypt and DASH with X11. Thus, we focus on analysing the rest ten leading blockchains. We set  $v_{tx} = \$500,000$  (i.e., the double-spending transaction amount is \$500,000), and  $h_2 = 2$  (i.e., the rentable mining power is twice of the honest mining power). We choose the value of  $N_c$  according to the recommended values from cryptocurrency community, as listed in Appendix C.

Figure 4 summarises our evaluation results. It shows that, unfortunately, all selected blockchains are vulnerable towards *cloud mining attacks*. For example:

- the attacker needs approximately \$2,000 to launch a *cloud mining attack* on ETC for an hour, and the net revenue will be \$33,899 if successful; and
- the attacker needs approximately \$2,600 to launch a *cloud mining attack* on BCH for an hour, and the net revenue will be \$117,198 if successful.

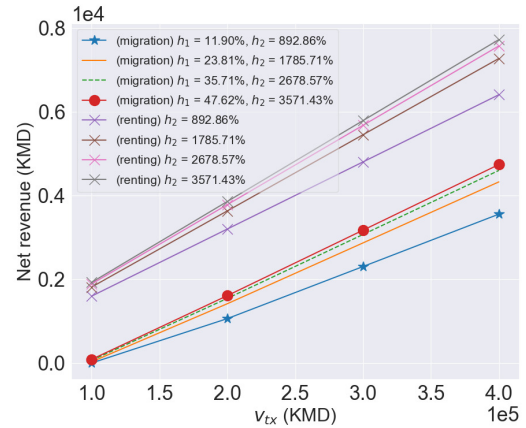


Figure 5: Profitability of mining power migration attacks and cloud mining attacks on Komodo (KMD). We choose  $\gamma = 0.3$ , and  $N_c = 30$  - the values recommended by KMD community.

**Evaluation of KMD** The only exception is Komodo (KMD): the attacker cannot profit much by launching *cloud mining attacks* on KMD. The reason is that the value of  $N_c$  recommended by the KMD community is 30 [29] – much higher than other blockchains. As shown in §3, increasing  $N_c$  can significantly reduce the profit of 51% attacks. Figure 5 shows the profitability of cloud mining attacks on KMD. Although feasible, both attacks on KMD will not give much extra profit - the attacker can only gain 1% ~ 2% more revenue compared to honest mining.

**Table 3: All 12 double-spent transactions during the 51% attack on ETC[33]. Transaction IDs and addresses are shortened.**

Trans. ID	From	To	Amount (ETC)	Height	Waiting time (#block)
0x1b47a700c0	0x3ccc8f7415	0xbbe1685921	600	7249357	-
<b>0xbba16320ec</b>	0x3ccc8f7415	0x2c9a81a120	4000	7254430	<b>5073</b>
0xb5e0748666	0x3ccc8f7415	0x882f944ece	5000	7254646	216
0xee31dff666	0x3ccc8f7415	0x882f944ece	9000	7255055	409
0xfe2da37fd9	0x3ccc8f7415	0x2c9a81a120	9000	7255212	157
0xa901fcf953	0x3ccc8f7415	0x2c9a81a120	15700	7255487	275
0xb9a30cee4f	0x3ccc8f7415	0x882f944ece	15700	7255554	67
0x9ae83e6fc4	0x3ccc8f7415	0x882f944ece	24500	7255669	115
0xaab50615e3	0x3ccc8f7415	0x53dffbb307	5000	7256012	343
<b>0xd592258715</b>	0x07ebd5b216	0xc4bcfee708	26000	7261492	<b>5480</b>
0x9ae8275fc	0x07ebd5b216	0xc4bcfee708	52800	7261610	118
0x4db8884278	0x07ebd5b216	0xc4bcfee708	52200	7261684	74
Total: 219500 ETC					

## 5 CASE STUDY: THE 51% ATTACK ON ETHEREUM CLASSIC

On 07/01/2019, a 51% attack happened to Ethereum Classic (ETC): the attacker double-spent transactions of more than \$1.1 million on a cryptocurrency exchange Gate.io[23]. Though the mining power source remains unknown, the attack is highly suspected as a *cloud mining attack*. In this section, we investigate this 51% attack as a case of *cloud mining attacks*. We use 51-MDP to evaluate the attack and estimate the attacker’s revenue. The evaluation result shows that the attacker launches the *cloud mining attack* in a fine-grained way, and obtains the theoretically optimal revenue from the attack. We also analyse the attacker’s behaviours, and show that the attacker’s strategy is the best practice of launching *cloud mining attacks*.

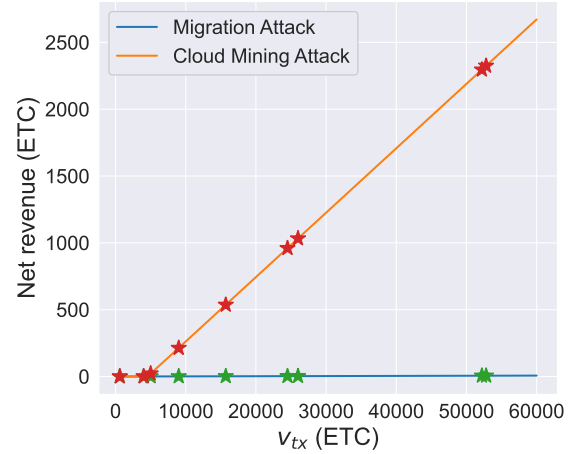
### 5.1 The attack details

Ethereum Classic (ETC) is a PoW-based blockchain forked from Ethereum (ETH). In 07/01/2019, a 51% attack on ETC resulted in the loss of more than 1.1 million dollars. The attack lasted for 4 hours, approximately from 0:40 am to 4:20 am UTC, 07/01/2019. During the attack, the attacker repetitively created coin withdrawal transactions on the Gate.io cryptocurrency exchange[30] and launched double-spending attacks[23]. Among these attempts, 12 transactions were successfully double-spent (listed in Table 3). Interestingly, the attacker later returned ETC equivalent to \$100,000 back to Gate.io[25].

While the source of the mining power for this attack remains unknown, the NiceHash cloud mining platform [21] is highly suspected. One day before the attack, an anonymous person rented all available Ethash (the mining algorithm used by ETH/ETC) mining power from NiceHash[31, 32].

### 5.2 Evaluation

Table 3 summarises the attack-related data. According to Gate.io[30], during the attack’s time period,  $N_c = 12$  – the recommended value of the ETH community and ETC community[34]. The price of ETC



**Figure 6: Simulated 51% attack on ETC. The blue line denotes the relative reward of *cloud mining attacks*. The orange line denotes the relative reward of *mining power migration attacks* for making comparisons. We also marked different transaction amounts in the attack using dots.**

and BTC was \$5.32 and \$4061.47, respectively. The mining difficulty of ETC was 131.80E+12, and the ratio  $h_2$  was about 1.16. The block reward is 4 ETC coins, and the price of Nicehash mining power was 3.8290 BTC/TH/day. We keep assuming  $\gamma = 0.3$  as there is no data on  $\gamma$  and the impact of  $\gamma$  is relatively small. Figure 6 shows our evaluation result. We mark the transaction values used by the attacker. We also plot the same curve in the *mining power migration attack* to compare the profitability of two mining power sources.

The result shows that when the transaction value is over 5000 ETC, double-spending is more profitable than by honest mining. Having a transaction (or a set of transactions) of value over 5000 ETC (approximately \$26,000 at the time of attack) should not be difficult for an attacker, so the incentive of launching double-spending attacks is very strong. In addition, *cloud mining attacks* are more profitable than *mining power migration attacks*. This means that renting mining power to attack ETC is much cheaper than migrating mining power from ETH. This is because both ETH and ETC use Ethash[35] as the mining algorithm. Ethash is a memory-hard function, making it GPU-friendly while ASIC-resistant[36]. Thus, any GPU can be used for mining ETH/ETC, making mining power much cheaper than that from dedicated hardware such as ASICs.

### 5.3 Estimating the attacker’s net revenue

According to Table 3, the attacker has stolen 219,500 ETC, which is the attacker’s gross revenue. As we don’t know transactions of failed 51% attack attempts, the cost of the attack is unknown. Thus, it’s hard to determine the cost of attacks, and we cannot calculate the attacker’s revenue directly. Nevertheless, we can apply 51-MDP to estimate the attacker’s net revenue. As we know the amount of mining power of the attacker, we can estimate the success rate of attacks. With the success rate, we can estimate the total amount of transactions for failed attacks, and therefore derive the total



amount of double-spending transactions. With the total amount and blockchain data as input, 51-MDP can estimate the attacker's net revenue. By using this method, we find that our estimated net revenue is approximately \$84773.40, which is close to \$100,000 – the value that the attacker returned to Gate.io after the attack[25].

**Modelling.** We first calculate the success rate of the attack. Let  $N_c$  be the required number of blocks to confirm transactions, and  $h_2$  be the ratio of attacker's mining power over the honest network. Then, the attacker controls  $p = \frac{h_2}{h_2+1}$  of the total mining power. Mining can be modelled as a binomial distribution  $B(n_a + n_h, p)$  where  $n_a$  and  $n_h$  are the numbers of blocks that the adversary and the honest miners have mined, respectively. Let  $Pr(X = n_a)$  be the probability of the attacker to mine  $n_a$  blocks while honest miners mine  $n_h$  blocks, and we have

$$Pr(X = n_a) = Pr(n_a; n_a + N_c, p) \quad (11)$$

When  $n_h = N_c \wedge n_a < N_c$ , the attack fails. Thus, the probability  $P$  of a successful 51% attack is calculated as

$$P = 1 - \sum_{n_a=0}^{N_c-1} Pr(n_a; n_a + N_c, p) \quad (12)$$

Then, we estimate the net revenue from observed successful attacks. Let  $R_s$  and  $R_f$  be the estimated revenue of successful and failed attack attempts, respectively. We have

$$\frac{R_s}{P} = \frac{R_s}{1-P} \implies R_f = \frac{(1-P)R_s}{P} \quad (13)$$

and the estimated total net revenue  $R$  is

$$R = R_s + R_f = R_s + \frac{(1-P)R_s}{P} \quad (14)$$

**Estimation.** Summing profits of all successful transactions in Figure 6, the attacker's gross revenue is approximately 9000 ETC coins ( $R_s = 9000$ ). Recall that  $h_2 = 1.16$ , and the attacker controls  $p = \frac{h_2}{h_2+1} = 53.7\%$  of ETC mining power. Recall that  $N_c = 12$  in ETC. From Equation 12, the success rate  $P$  of an attack can be calculated as

$$P = 1 - \sum_{n_a=0}^{N_c-1} Pr(n_a; n_a + N_c, p) \quad (15)$$

$$= 1 - \sum_{n_a=0}^{N_c-1} C_{n_a+N_c}^{n_a} p^{n_a} (1-p)^{N_c} \quad (16)$$

$$= 56.48\% \quad (17)$$

From Equation 14, we calculate the estimated net revenue  $R$  as

$$R = R_s + R_f = R_s + \frac{(1-P)R_s}{P} \quad (18)$$

$$= 9000 + \frac{(1 - 0.5648) \cdot 9000}{0.5648} \quad (19)$$

$$= 9000 + 6934.85 = 15934.85 \text{ (ETCcoins)} \quad (20)$$

Therefore, the attacker's net revenue is expected to be  $9000 + 6934.85 = 15934.85$  ETC coins. At the time of attack, 15934.85 ETC coins is equivalent to \$84773.40, which is slightly less than \$100,000 – the amount that the attacker returned to Gate.io. To achieve the optimal revenue, the attacker should launch *cloud mining attacks* using the optimal strategy, which is usually fine-grained as shown in Table 5 in Appendix B. This indicates that, the attacker adopted a near optimal strategy for launching *cloud mining attacks*.

## 6 THE ATTACKER'S STRATEGY

According to Table 3, the attacker continuously increased the value of new transactions throughout the attack (except the last double spending of the first account). It is suspected that this behaviour belongs to the strategies used by the attacker to maximise and stabilise its revenue, for the following reasons.

**Stabilising the revenue.** First, launching multiple small double-spending attempts can stabilise the expected revenue. Double-spending attacks may fail even if the adversary controls more than 50% of the computing power. Compared to a one-off attempt, the revenue will be more stable if dividing a transaction into multiple smaller transactions.

**Bypassing risk management systems.** Second, this strategy may be used for bypassing risk management systems of cryptocurrency exchanges. Cryptocurrency exchanges run risk management systems to combat misbehaviours, including fraudulent payments and abnormal login attempts. A huge coin withdrawal transaction is very likely to trigger the risk management system, while multiple small transactions might be overlooked. In addition, a big transaction may lead to longer confirmation time, and a longer attack period is easier to be detected. Therefore, bypassing the risk management system is naturally a part of the attacker's strategy. According to the Gate.io report [23], the risk management system ignored transactions from the attacker, as the attack was decently prepared – they registered and real-name authenticated the account on Gate.io more than 3 months before the attack. The attacker slowly increasing the transaction value is also highly suspected as an approach for reverse-engineering the threshold of invoking the risk management system.

**Using multiple wallets.** In addition, we investigate the waiting time between each two attacks (quantified by using the number of blocks). The waiting time varies mostly from 67 blocks to 409 blocks. Interestingly, there are two large gaps of more than 5000 blocks before the transactions 0xbba16320ec and 0xd592258715. The first gap is after the first attack, and the second gap is before the attacker changed its account. The first gap may be because the attacker was cautious when first launching the double-spending attack. The attacker double-spent a transaction of 600 ETC coins, which is much smaller than its following transactions. After the first attack, the attacker waited for a long time to confirm the success of it, then started to increase the transaction value. The second gap may be because the attacker ran out of money in its first account 0x3ccc8f7415, so changed to another account 0x07ebd5b216. The last transaction 0xd592258715 sent by account 0x3ccc8f7415 is right before the second gap. It's value is 5000 ETC coins, which is much smaller than its previous transaction of 24500 ETC coins.

After the transaction 0xd592258715, the attacker changed to its another account 0x07ebd5b216, leading to the second time gap.

## 7 DISCUSSIONS ON ATTACK PREVENTION

This section discusses short term and long term solutions to detect and prevent both the *mining power migration attack* and *cloud mining attack*. We make use of the 51% attack incident on ETC (see §5) as an example, and demonstrate how to make use of 51-MDP to gain insights that helps to defend against such cloud mining attacks in Section 7.1.

### 7.1 Quick remedies

We first discuss several quick remedies for cryptocurrency exchanges to reduce the damage of 51% attacks. It consists of detecting potential attack attempts, and reacting upon detection through conventional risk management techniques.

**Detecting 51% attacks.** For the two 51% attacks, the attacker needs to move a considerable amount of mining power from somewhere, such as the other blockchain or a cloud mining service.

This gives us an opportunity to detect the anomaly state where a “large” portion of mining power suddenly disappears from a source. For example, a potential victim can monitor the available compatible mining power of other blockchains or cloud mining services. If there is a sudden change on the amount of total available mining power, then this might indicate a potential 51% attack. The threshold of “large” is blockchain specific according to the risk management rules. For example, a blockchain which cares less on such attacks can set the threshold to 100% of its current total mining power. That is, once the disappearance of this amount of mining power in other sources is detected, then an alarm of a potential attack is raised. However, this will not detect an attacker who gains 90% mining power from one source, and 10% from another sources. A more cautious blockchain may set a tighter threshold, e.g. 5%, however, this may cause false positive alarms.

There are two limitations of this method. First, it may introduce false positive detections, and it is hard to identify which blockchain will be the victim upon detection. Second, it is expensive to monitor all the possible mining compatible blockchains and cloud mining services in real-time. Even though, the monitoring result may be inaccurate.

**Reactions upon 51% attacks.** Upon detecting the two 51% attacks, the exchange can take several reactions to prevent them from happening. First, the exchange can increase the number  $N_c$  of block confirmations. According to Figure 7, for the 51% attack on ETC in 2019, the attack can be avoided if increasing  $N_c$  to 18. The ETC community’s action further proves the effectiveness of increasing  $N_c$ : after the last 51% attack [6], the ETC community urged to raise  $N_c$  to 10,000 [37], while it takes approximately two weeks to generate 10,000 blocks. Second, the exchange can decrease the maximum amount of cash out. Figure 2b and 7 show the impact of the transaction amount  $v_{tx}$  on the 51% attack on ETC. If the maximum amount of cash out was limited to 9,000 ETC (approximately \$38340.0), then the attacker would no longer profit. Third, limiting the frequency of cash out also discourages 51% attacks. With a limited frequency of cash out, the attacker will need more time to launch attacks, and thus the attack takes more opportunity cost. Last, when the

risk management system considers attacks are likely to happen, then the exchange can halt all cash out temporarily. We consider quantifying the effectiveness of these countermeasures based on existing Anti-Money Laundering models as future work.

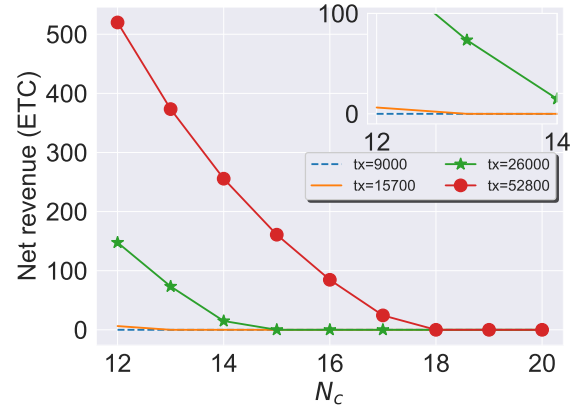


Figure 7: Impacts of  $v_{tx}$  and  $N_c$  on the ETC attack.

### 7.2 Long term solutions

Though easy to deploy, these quick remedies are not sufficient. First, they sacrifice the usability of blockchains. Second, all of them only minimise the effect of the potential attacks, rather than eliminating them.

Improving the PoW protocol from the protocol-level is also a promising approach to defend against our attacks. There are limited works aiming at minimizing the effects of powerful miners being malicious. For example, RepuCoin[38] aims at mitigating the 51% attacks in PoW protocols by introducing the “physics-based reputation”. In RepuCoin, the weight of each miner is decided by the reputation rather than the mining power. The reputation of a miner depends on the mining power, but also takes the past contribution of miners into consideration. In this way, a 51% attacker cannot gain a high-enough reputation within a short time period, and the 51% attacks we studied become much harder to launch.

## 8 RELATED WORK

Table 4 classifies existing attacks and analyses on PoW-based blockchains.

To our knowledge, we are the first to challenge the honest majority assumption of PoW-based blockchains in the presence of externally available mining power. Most existing papers [8, 9, 10, 11, 12, 13, 14, 15, 16, 17, 18, 19] analyse PoW-based blockchains while assuming the honest majority and omitting external factors. We summarise them in Appendix A. In this section, we compare our work with two closely related work, namely fickle mining[39, 40] and bribery attacks[20, 41, 42, 19].

Fickle mining[39, 40] is that, a miner adaptively allocates mining power on two blockchains with the same mining algorithm (e.g., BTC and BCH) for extra profit. Similar to *mining power migration attacks*, fickle mining also consider miners’ behaviours between

multiple blockchains. While fickle mining assumes the honest majority and miners mine honestly, we consider the honest majority can be broken and rational miners can launch 51% attacks.

Bonneau et al.[20] introduce the family of bribery attacks, where an adversary bribes other miners and asks them to launch 51% attacks. They discuss two bribery attacks: one is our *cloud mining attack*, and the other is by creating a mining pool with negative fee. While Bonneau et al.[20] only informally discuss them, we formally study the *cloud mining attack* and additionally consider *mining power migration attack*. There have been new bribery attack variants[41, 42, 19], where an adversary bribes miners to mine on a previous block and fork the blockchain. While these attacks are triggered by an external adversary, our results show that even without an external adversary, miners are incentivised to launch 51% attacks.

**Table 4: Taxonomy of existing attacks and analyses.**

		System setting	
		Standalone system	System + external environment
Adversary's objective	Optimise profit	Selfish mining [8, 9, 10, 11]	Fickle mining [39, 40]
	Break consistency & liveness	51% attacks [12, 13, 14, 15, 16, 17, 18, 19]	Bribery attacks [20, 41, 42, 19] + <b>This work</b>

## 9 CONCLUSION

In this paper, we challenge *honest majority* – the key assumption of PoW-based consensus. We propose the 51-MDP model to formalise two variants of 51% attacks that use externally available mining power, and formally prove that the incentive mechanism in existing PoW-based blockchains usually encourage rational miners to launch 51% attacks rather than mine honestly. Of independent interest, 51-MDP can estimate the revenue of such 51% attacks, describes the attacker's strategy, and analyse attacks that consider external factors.

In the future, we will explore PoW-based consensus protocols that resist against 51% attacks using external mining power. A possible approach is to raise the threshold of 51% attacks by using accumulated historical reputation [38].

## ACKNOWLEDGMENTS

We thank Yackolley Amoussou-Guenou for the helpful feedback. This work was partially supported by the Australian Research Council (ARC) under project DE210100019.

## REFERENCES

[1] Satoshi Nakamoto. 2008. Bitcoin: a peer-to-peer electronic cash system.  
 [2] coinmarketcap.com. 2019. Top 100 cryptocurrencies by market capitalization. (2019). <https://coinmarketcap.com>.

[3] komodoplatfrom.com. 2019. The anatomy of a 51% attack and how you can prevent one. (2019). <https://komodoplatfrom.com/51-attack-how-komodo-can-help-prevent-one>.  
 [4] Terence Zimwara. 2020. Ethereum classic suffers 51% attack again: delisting risk amplified. (2020). <https://news.bitcoin.com/ethereum-classic-suffers-51-attack-again-delisting-risk-amplified>.  
 [5] Patrick Thompson. 2020. Over \$1m double-spent in latest ethereum classic 51% attack. (2020). <https://coingeek.com/over-1m-double-spent-in-latest-ethereum-classic-51-attack>.  
 [6] Dan Howarth. 2020. Hackers launch third 51% attack on ethereum classic this month. (2020). <https://decrypt.co/40196/hackers-launch-third-51-attack-on-ethereum-classic-this-month>.  
 [7] Amitanand S Aiyer, Lorenzo Alvisi, Allen Clement, Mike Dahlin, Jean-Philippe Martin, and Carl Porth. 2005. BAR fault tolerance for cooperative services. In *SOSP 2005*, 45–58.  
 [8] Ittay Eyal and Emin Gün Sirer. [n. d.] Majority is not enough: bitcoin mining is vulnerable. In *Financial Cryptography and Data Security - 18th International Conference, FC 2014, Christ Church, Barbados, March 3-7, 2014, Revised Selected Papers*.  
 [9] Kartik Nayak, Srijan Kumar, Andrew Miller, and Elaine Shi. 2016. Stubborn mining: generalizing selfish mining and combining with an eclipse attack. In *IEEE European Symposium on Security and Privacy, EuroS&P 2016, Saarbrücken, Germany, March 21-24, 2016*, 305–320.  
 [10] Yujin Kwon, Dohyun Kim, Yunmok Son, Eugene Y. Vasserman, and Yongdae Kim. 2017. Be selfish and avoid dilemmas: fork after withholding (FAW) attacks on bitcoin. In *Proceedings of the 2017 ACM SIGSAC Conference on Computer and Communications Security, CCS 2017, Dallas, TX, USA, October 30 - November 03, 2017*, 195–209.  
 [11] Ayelet Sapirshtein, Yonatan Sompolinsky, and Aviv Zohar. [n. d.] Optimal selfish mining strategies in bitcoin. In *Financial Cryptography and Data Security - 20th International Conference, FC 2016, Christ Church, Barbados, February 22-26, 2016, Revised Selected Papers*.  
 [12] Juan A. Garay, Aggelos Kiayias, and Nikos Leonardos. 2015. The bitcoin backbone protocol: analysis and applications. In *Advances in Cryptology - EUROCRYPT 2015 - 34th Annual International Conference on the Theory and Applications of Cryptographic Techniques, Sofia, Bulgaria, April 26-30, 2015, Proceedings, Part II*, 281–310.  
 [13] Rafael Pass, Lior Seeman, and Abhi Shelat. 2017. Analysis of the blockchain protocol in asynchronous networks. In *Advances in Cryptology - EUROCRYPT 2017 - 36th Annual International Conference on the Theory and Applications of Cryptographic Techniques, Paris, France, April 30 - May 4, 2017, Proceedings, Part II*, 643–673.  
 [14] Juan A. Garay, Aggelos Kiayias, and Nikos Leonardos. 2017. The bitcoin backbone protocol with chains of variable difficulty. In *Advances in Cryptology - CRYPTO 2017 - 37th Annual International Cryptology Conference, Santa Barbara, CA, USA, August 20-24, 2017, Proceedings, Part I*, 291–323.  
 [15] Arthur Gervais, Ghassan O. Karame, Karl Wüst, Vasileios Glykantzis, Hubert Ritzdorf, and Srdjan Capkun. 2016. On

the security and performance of proof of work blockchains. In *CCS*.

- [16] Lucianna Kiffer, Rajmohan Rajaraman, and Abhi Shelat. 2018. A better method to analyze blockchain consistency. In *Proceedings of the 2018 ACM SIGSAC Conference on Computer and Communications Security, CCS 2018, Toronto, ON, Canada, October 15-19, 2018*, 729–744.
- [17] Ren Zhang and Bart Preneel. 2019. Lay down the common metrics: evaluating proof-of-work consensus protocols’ security. In *Proceedings of the 40th IEEE Symposium on Security and Privacy (S&P)*. IEEE.
- [18] Miles Carlsten, Harry A. Kalodner, S. Matthew Weinberg, and Arvind Narayanan. 2016. On the instability of bitcoin without the block reward. In *Proceedings of the 2016 ACM SIGSAC Conference on Computer and Communications Security, Vienna, Austria, October 24-28, 2016*, 154–167.
- [19] Aljosha Judmayer, Nicholas Stifter, Alexei Zamyatin, Itay Tsabary, Ittay Eyal, Peter Gazi, Sarah Meiklejohn, and Edgar Weippl. 2019. Pay-to-win: incentive attacks on proof-of-work cryptocurrencies. *Cryptology ePrint Archive*. (2019).
- [20] Joseph Bonneau. 2016. Why buy when you can rent? - bribery attacks on bitcoin-style consensus. In *Financial Cryptography and Data Security - FC 2016 International Workshops, BITCOIN, VOTING, and WAHC*, 19–26.
- [21] nicehash. 2019. Nicehash - largest crypto-mining marketplace. (2019). <https://www.nicehash.com>.
- [22] etherchain. 2019. Top miners over the last 24h - etherchain.org. (2019). <https://www.etherchain.org/charts/topMiners>.
- [23] gate.io. 2019. Gate.io research: confirmed the etc 51% attack and attacker’s accounts - gate.io news. (2019). <https://www.gate.io/article/16735>.
- [24] David Z. Morris. [n. d.] The ethereum classic 51% attack is the height of crypto-irony. (). <https://breakermag.com/the-ethereum-classic-51-attack-is-the-height-of-crypto-irony>.
- [25] gate.io. 2019. Gate.io got back 100k usd value of etc from the etc 51% attacker. (2019). <https://www.gate.io/article/16740>.
- [26] Iadine Chadès, Guillaume Chapron, Marie-Josée Cros, Frédéric Garcia, and Régis Sabbadin. 2014. Mdptoolbox: a multi-platform toolbox to solve stochastic dynamic programming problems. *Ecography*, 37, 9, 916–920.
- [27] Sheldon M Ross. 2014. *Introduction to stochastic dynamic programming*.
- [28] blockchain.com. 2019. Bitcoin hashrate distribution - blockchain.info. (2019). <https://www.blockchain.com/en/pools>.
- [29] komodoplatform. 2018. Security: delayed proof of work (dpow). (2018). <https://komodoplatform.com/security-delayed-proof-of-work-dpow/>.
- [30] gate.io. 2019. Gate.io - the gate of blockchain assets exchange. (2019). <https://www.gate.io>.
- [31] David Z. Morris. 2019. The Ethereum Classic 51% attack is the height of crypto-irony. (2019). <https://breakermag.com/the-ethereum-classic-51-attack-is-the-height-of-crypto-irony/>.
- [32] Wes Messamore. 2019. Nicehash to smaller cryptocurrency miners : if you can’t beat 51% attackers who lease our hash power, join them. (2019). <https://www.ccn.com/nicehash-to-smaller-cryptocurrency-miners-if-you-cant-beat-51-attackers-who-lease-our-hash-power-join-them>.
- [33] Mark Nesbitt. 2019. Deep chain reorganization detected on ethereum classic (etc). (2019). <https://blog.coinbase.com/ethereum-classic-etc-is-currently-being-51-attacked-33be13ce32de>.
- [34] reddit. 2019. How many confirms is considered ’safe’ in ethereum? (2019). [https://www.reddit.com/r/ethereum/comments/4eplsv/how\\_many\\_confirms\\_is\\_considered\\_safe\\_in\\_ethereum](https://www.reddit.com/r/ethereum/comments/4eplsv/how_many_confirms_is_considered_safe_in_ethereum).
- [35] James Ray. 2019. Dagger hashimoto. (2019). <https://github.com/ethereum/wiki/wiki/Dagger-Hashimoto>.
- [36] James Ray. 2018. Ethash design rationale. (2018). <https://github.com/ethereum/wiki/wiki/Ethash-Design-Rationale>.
- [37] Ethereum Classic Community. 2020. Tweet of ethereum classic. (2020). [https://twitter.com/eth\\_classic/status/1299832466643931136](https://twitter.com/eth_classic/status/1299832466643931136).
- [38] Jiangshan Yu, David Kozhaya, Jeremie Decouchant, and Paulo Verissimo. 2019. Repucoin: your reputation is your power. *IEEE Transactions on Computers*.
- [39] Yujin Kwon, Hyoungshick Kim, Jinwoo Shin, and Yongdae Kim. 2019. Bitcoin vs. bitcoin cash: coexistence or downfall of bitcoin cash? In *2019 IEEE Symposium on Security and Privacy (SP)*. IEEE, 935–951.
- [40] Alexander Spiegelman, Idit Keidar, and Moshe Tennenholtz. 2018. Game of coins. *arXiv preprint arXiv:1805.08979*.
- [41] Kevin Liao and Jonathan Katz. 2017. Incentivizing blockchain forks via whale transactions. In *International Conference on Financial Cryptography and Data Security*. Springer, 264–279.
- [42] Fredrik Winzer, Benjamin Herd, and Sebastian Faust. 2019. Temporary censorship attacks in the presence of rational miners. In *2019 IEEE European Symposium on Security and Privacy Workshops (EuroS&PW)*. IEEE, 357–366.
- [43] Aggelos Kiayias, Alexander Russell, Bernardo David, and Roman Oliynykov. 2017. Ouroboros: a provably secure proof-of-stake blockchain protocol. In *Annual International Cryptology Conference*. Springer, 357–388.
- [44] Ittay Eyal. 2015. The miner’s dilemma. In *2015 IEEE Symposium on Security and Privacy, SP 2015, San Jose, CA, USA, May 17-21, 2015*, 89–103.
- [45] Nick Arnosti and S Matthew Weinberg. 2018. Bitcoin: a natural oligopoly. *arXiv preprint arXiv:1811.08572*.

## A OTHER RELATED WORK

While our paper analyses PoW-based blockchains’ security in the presence of externally available mining power, most existing research considers blockchains as a stand-alone system and omits external environment. We summarise existing efforts on analysing PoW-based blockchains as follows.

**Formalisations of PoW-based consensus.** Garay et al.[12] formalise Bitcoin’s consensus under lock-step synchronous networks, and define two properties *common prefix* and *chain quality*. Pass et al.[13] extend this model to synchronous networks. Garay et al.[14] further extend it with dynamic difficulty adjustment. Kiayias et al.[43] further defined another property on the liveness called the *chain growth*.

**Evaluation frameworks of PoW-based consensus** Gervais et al.[15] propose an MDP-based evaluation framework for quantitatively analyse PoW-based consensus security, with a focus on the resistance of selfish mining [8] and double-spending. Zhang et al.[17] generalised this framework and proposed a cross-protocol evaluation framework with three new properties measuring the resistance of several attacks on PoW-based consensus, namely *incentive compatibility* (i.e. the net revenue lower bound of honest miners under selfish mining attacks), *subversion gain* (i.e., the profit upper bound of an adversary performing double spending), and *censorship susceptibility* (i.e., the profit loss of honest miners under censorship retaliation attacks).

**Models of specific attacks on PoW-based consensus** Most papers use MDP-based models[11, 15, 16, 17] or game-theoretic models[8, 44, 18, 9, 10, 39, 19, 45] to evaluate attacks on PoW-based consensus. Our 51-MDP model adopts the MDP-based approach. While similar with models in [11, 15] in terms of notations and processes, 51-MDP additionally considers externally available mining power. Our 51-MDP model is more complex than existing MDP-based models, as the number of parameters are doubled. We reduce the excessive parameters for simplifying the implementation and simulation of without losing correctness.

## B OPTIMAL STRATEGY FOR BTC/BCH

In this section, we show the optimal strategy of launching mining power migration attacks from BTC to BCH. We use the same experimental setting (with one pair of hashrate and transaction amount), as in §4. More specifically, we assume the adversary with  $\alpha = 0.3$  uses the Sha256d mining power of hashrate  $5000E + 15$  (i.e.,  $h_1 = 0.125$  and  $h_2 = 3.462$ ), and a transaction of \$300,000 to launch *mining power migration attacks*. We use the default value 6 for  $N_c$ . We apply the *ValueIteration* algorithm[27] with a discount value of 0.9 and an epsilon value of 0.1 for 51-MDP.

Table 5 outlines the optimal strategy with notations. Each subtable describes the optimal strategy with a fixed  $\beta$ . For each table, the x-axis is  $l_h$ , while the y-axis is  $l_a$ . For each cell in a table, the three letters denote the optimal actions when  $fork = r, ir, p$ , respectively. More specifically, A, O, W, M denote **ADOPT**, **OVERRIDE**, **WAIT** and **MATCH**, respectively; **W** and **M** denote **WAIT\_INC** and **MATCH\_INC**, respectively; and **w** and **m** denote **WAIT\_DEC** and **MATCH\_DEC**, respectively. Among all cells, there are 7 different values labelled by different colours, namely: AAA in light blue; WAA in deep blue; MMW in green; OAO in yellow; WAW in red; WAW in brown; and wAw in purple (which only appears when  $\beta \geq \delta$ ).

We divide each matrix into four parts according to  $N_c$  (here  $N_c = 6$ ), namely the upper left, upper right, lower left, and lower right. The upper left part represents the situation such that after the last common block in the blockchain, both honest branch and the attacker’s branch do not contain enough number ( $N_c$ ) of blocks as required for confirmation; whereas in the lower right part, both branches contain enough number ( $N_c$ ) of blocks. In the upper right part, the honest branch contains enough number ( $N_c$ ) of blocks as required for confirmation, but not the attacker’s branch, whereas the lower left represents the opposite scenario.

**The upper left part (when  $l_a < N_c \wedge l_h < N_c$ ).** The adversary’s optimal action is mostly **WAIT\_INC** i.e., increasing its mining power on BCH for mining more blocks. Note that in this scenario,  $fork$  can only be  $p$  (i.e., the adversary’s branch is still private and unpublished), and the first two letters for each cell (represent the action when  $fork = r \vee fork = ir$ , respectively) are unreachable states. When  $l_a < N_c \wedge l_h < N_c$ , the merchant does not confirm the transaction, so the adversary cannot publish its branch to double-spend. The adversary needs at least  $N_c$  blocks to revert the honest blockchain, as the merchant will accept the transaction only when  $l_h \geq N_c$ . Therefore, at this stage, the adversary should make  $l_a \geq N_c$  as fast as possible, which can be achieved by allocating more mining power on BCH. When  $l_a = 5 \wedge l_h = 0 \wedge \beta = 0.8$ , the optimal action is **WAIT**. The reason is that the adversary has already gained significant advantage (5 blocks longer than the honest blockchain), and he has already secured the attack with its existing mining power with a high probability. When  $\beta = 1.0$ , the optimal action is **WAIT** except for  $l_a = 5 \wedge l_h = 0$ , where the optimal strategy is **WAIT\_DEC**. In this scenario, the adversary has no more mining power for BCH, so cannot do **WAIT\_INC**. When  $l_a = 5 \wedge l_h = 0$ , the adversary can even move some mining power on BCH back to BTC, so that he gains more reward from honestly mining BTC while securing the attack on BCH.

**The upper right part (when  $l_a < N_c \wedge l_h \geq N_c$ ).** The merchant has confirmed the transaction (as  $l_h \geq N_c$ ), but the adversary’s branch falls behind the honest blockchain. The adversary’s optimal action is **Abort** with  $l_h - l_a \geq 7$  (the light blue upper right corner), and mostly **WAIT\_INC** (**WAIT** when  $\beta = 1.0$ ) with  $l_h - l_a < 7$ . When  $l_h - l_a \geq 7$ , the adversary’s branch significantly falls behind the honest blockchain, so he should give up to reduce the damage. When  $l_h - l_a \leq 5$ , the adversary’s branch does not fall behind too much, so he still has a chance to catch up by increasing its mining power (i.e., **WAIT\_INC**). When  $\beta = 0.0 \wedge l_a - l_h = 6 \wedge l_a \neq 9$  (the dark blue area), the adversary’s optimal action is **WAIT\_INC** with  $fork = r$  (i.e., the adversary’s branch is published but the honest blockchain is confirmed), but is **ABORT** with  $fork = p$  (i.e., the adversary’s branch is unpublished). When the adversary publishes its branch, some miners with  $\gamma$  honest mining power choose to mine on this branch. In this way, the adversary obtains extra mining power from other miners, so becomes more confident on the attack.

**The lower left part (when  $l_a \geq N_c \wedge l_h < N_c$ ).** The merchant has not confirmed the transaction (as  $l_h \leq N_c$ ). If  $l_a > N_c$ , the adversary has secured the attack: he can just wait for the merchant to confirm the transaction (when the honest blockchain reaches  $N_c$ ), then publish its branch to revert the blockchain. If  $l_a = N_c$ , the adversary only needs to mine one more block to secure the attack. When  $\beta$  becomes bigger, the adversary is more intended to do **WAIT\_DEC** (the purple area) compared to **WAIT** (the brown area) and **WAIT\_INC** (the red area). Similar with the upper right part, with bigger  $\beta$ , the adversary has a good chance to make the attack successful, so he can use less mining power to attack BCH while using more mining power to honestly mine BTC.

**The lower right part (when  $l_a \geq N_c \wedge l_h \geq N_c$ ).** The merchant has confirmed the transaction (as  $l_h \geq N_c$ ). When  $l_a > l_h$ , the adversary can revert the honest blockchain and double-spend its money directly by **OVERRIDE** (i.e., publishing its branch). When

Table 5: Optimal strategy for a BTC miner to launch *mining power migration attacks* on BCH, where w denotes WAIT\_DEC, W denotes WAIT, W denotes WAIT\_INC, m denotes MATCH\_DEC, M denotes MATCH, M denotes MATCH\_INC, O denotes OVERRIDE, and A denotes ABORT.

(a) $\beta = 0.$										(b) $\beta = 0.2.$											
0	WAW	WAW	WAW	WAW	WAW	WAW	WAA	AAA	AAA	AAA	0	WAW	WAW	WAW	WAW	WAW	WAW	WAW	AAA	AAA	AAA
1	WAW	WAW	WAW	WAW	WAW	WAW	WAW	WAA	AAA	AAA	1	WAW	WAW	WAW	WAW	WAW	WAW	WAW	WAW	WAW	AAA
2	WAW	WAW	WAW	WAW	WAW	WAW	WAW	WAW	WAW	AAA	2	WAW	WAW	WAW	WAW	WAW	WAW	WAW	WAW	WAW	AAA
3	WAW	WAW	WAW	WAW	WAW	WAW	WAW	WAW	WAW	AAA	3	WAW	WAW	WAW	WAW	WAW	WAW	WAW	WAW	WAW	AAA
4	WAW	WAW	WAW	WAW	WAW	WAW	WAW	WAW	WAW	AAA	4	WAW	WAW	WAW	WAW	WAW	WAW	WAW	WAW	WAW	AAA
5	WAW	WAW	WAW	WAW	WAW	WAW	WAW	WAW	WAW	AAA	5	WAW	WAW	WAW	WAW	WAW	WAW	WAW	WAW	WAW	AAA
6	WAW	WAW	WAW	WAW	WAW	WAW	WAW	WAW	WAW	AAA	6	WAW	WAW	WAW	WAW	WAW	WAW	WAW	WAW	WAW	AAA
7	WAW	WAW	WAW	WAW	WAW	WAW	OAO	MMW	WAW	WAW	7	wAw	wAw	wAw	wAw	wAw	wAw	OAO	MMW	WAW	WAW
8	WAW	WAW	WAW	WAW	WAW	WAW	OAO	OAO	MMW	WAW	8	wAw	wAw	wAw	wAw	wAw	wAw	OAO	OAO	MMW	WAW
9	WAW	WAW	WAW	WAW	WAW	WAW	OAO	OAO	OAO	MMW	9	wAw	wAw	wAw	wAw	wAw	wAw	OAO	OAO	OAO	MMW

(c) $\beta = 0.4.$										(d) $\beta = 0.6.$											
0	WAW	WAW	WAW	WAW	WAW	WAW	WAW	AAA	AAA	AAA	0	WAW	WAW	WAW	WAW	WAW	WAW	WAW	WAW	AAA	AAA
1	WAW	WAW	WAW	WAW	WAW	WAW	WAW	WAW	WAW	AAA	1	WAW	WAW	WAW	WAW	WAW	WAW	WAW	WAW	WAW	AAA
2	WAW	WAW	WAW	WAW	WAW	WAW	WAW	WAW	WAW	AAA	2	WAW	WAW	WAW	WAW	WAW	WAW	WAW	WAW	WAW	AAA
3	WAW	WAW	WAW	WAW	WAW	WAW	WAW	WAW	WAW	AAA	3	WAW	WAW	WAW	WAW	WAW	WAW	WAW	WAW	WAW	AAA
4	WAW	WAW	WAW	WAW	WAW	WAW	WAW	WAW	WAW	AAA	4	WAW	WAW	WAW	WAW	WAW	WAW	WAW	WAW	WAW	AAA
5	WAW	WAW	WAW	WAW	WAW	WAW	WAW	WAW	WAW	AAA	5	WAW	WAW	WAW	WAW	WAW	WAW	WAW	WAW	WAW	AAA
6	WAW	WAW	WAW	WAW	WAW	WAW	WAW	WAW	WAW	AAA	6	wAw	wAw	wAw	wAw	wAw	wAw	wAw	OAO	MMW	WAW
7	wAw	wAw	wAw	wAw	wAw	wAw	OAO	MMW	WAW	WAW	7	wAw	wAw	wAw	wAw	wAw	wAw	OAO	MMW	WAW	WAW
8	wAw	wAw	wAw	wAw	wAw	wAw	OAO	OAO	MMW	WAW	8	wAw	wAw	wAw	wAw	wAw	wAw	OAO	OAO	MMW	WAW
9	wAw	wAw	wAw	wAw	wAw	wAw	OAO	OAO	OAO	MMW	9	wAw	wAw	wAw	wAw	wAw	wAw	OAO	OAO	OAO	MMW

(e) $\beta = 0.8.$										(f) $\beta = 1.0.$											
0	WAW	WAW	WAW	WAW	WAW	WAW	WAW	AAA	AAA	AAA	0	WAW	WAW	WAW	WAW	WAW	WAW	WAW	WAW	AAA	AAA
1	WAW	WAW	WAW	WAW	WAW	WAW	WAW	WAW	WAW	AAA	1	WAW	WAW	WAW	WAW	WAW	WAW	WAW	WAW	WAW	AAA
2	WAW	WAW	WAW	WAW	WAW	WAW	WAW	WAW	WAW	AAA	2	WAW	WAW	WAW	WAW	WAW	WAW	WAW	WAW	WAW	AAA
3	WAW	WAW	WAW	WAW	WAW	WAW	WAW	WAW	WAW	AAA	3	WAW	WAW	WAW	WAW	WAW	WAW	WAW	WAW	WAW	AAA
4	WAW	WAW	WAW	WAW	WAW	WAW	WAW	WAW	WAW	AAA	4	WAW	WAW	WAW	WAW	WAW	WAW	WAW	WAW	WAW	AAA
5	WAW	WAW	WAW	WAW	WAW	WAW	WAW	WAW	WAW	AAA	5	wAw	wAw	wAw	wAw	wAw	wAw	wAw	WAW	WAW	WAW
6	wAw	wAw	wAw	wAw	wAw	wAw	WAW	WAW	WAW	WAW	6	wAw	wAw	wAw	wAw	wAw	wAw	wAw	OAO	MMW	WAW
7	wAw	wAw	wAw	wAw	wAw	wAw	OAO	MMW	WAW	WAW	7	wAw	wAw	wAw	wAw	wAw	wAw	wAw	OAO	MMW	WAW
8	wAw	wAw	wAw	wAw	wAw	wAw	OAO	OAO	MMW	WAW	8	wAw	wAw	wAw	wAw	wAw	wAw	wAw	OAO	OAO	MMW
9	wAw	wAw	wAw	wAw	wAw	wAw	OAO	OAO	OAO	MMW	9	wAw	wAw	wAw	wAw	wAw	wAw	wAw	OAO	OAO	OAO

Table 6: Data of 15 PoW blockchains and NiceHash prices.

	Rank	Rent(\$/h/s)	Coin Price(\$)	Hashrate	$N_c$
Bitcoin	1	2E-18	3585.99	4E+19	6
Ethereum	3	1.36E-13	118.53	142E+14	12
BitcoinCash	4	2E-18	126.31	1.44E+18	6
Litecoin	8	3.34E-14	30.84	2.77E+14	6
Monero	14	9.13E-11	43.64	9.29E+8	10
Dash	15	3.53E-16	71.79	2.32E+15	6
EthereumClassic	18	1.36E-13	4.26	8.62E+12	12
Zcash	20	1.38E-08	54.77	3.36E+9	6
Dogecoin	23	3.34E-14	0.002132	3.76E+14	6
BitcoinGold	26	1.38E-08	11.93	3170000	6
Siacoin	46	3.74E-17	0.002389	1.88E+15	6
Komodo	55	1.38E-08	0.640292	4.48E+7	30
Electroneum	67	9.13E-11	0.006184	4.4E+9	20
Ravencoin	94	3.36E-13	0.011905	5.9E+12	6
Zcoin	99	2.79E-12	4.83	9.69E+10	6

$l_a < l_h$ , the adversary's branch slightly falls behind the honest blockchain, so he can try to catch up by WAIT\_INC (except when  $\beta = 1.0$ ). When  $l_a = l_h$ , if  $fork = r$  (i.e., the adversary has published its branch), the adversary's optimal action is MATCH\_INC (except when  $\beta = 1.0$ ). Meanwhile, if  $fork = p$  (i.e., the adversary has not published its branch), the adversary's optimal action is WAIT\_INC

(except when  $\beta = 1.0$ ). This is because when  $l_a = l_h \wedge fork = r$  (i.e., the adversary's branch is published and its length is the same as the honest blockchain), the adversary lost control on its branch: he can only do MATCH-style actions but cannot do WAIT-style actions. Thus, the adversary can maximise the probability of success only by allocating more mining power to BCH. If  $l_a = l_h \wedge fork = p$  (i.e., the adversary's branch is private and its length is the same as the honest blockchain), the adversary can keep waiting and increase the mining power to secure the attack.

## C EXPERIMENTAL DATA

Table 6-8 summarise data used in this paper. We fetched the blockchain data from Coinmarketcap[2] on 19 February 2019, and prices of renting mining power from NiceHash[21] on 07 April 2019. For analysing the 51% attack on ETC, we fetched the attack details from [23], the blockchain data from coinmarketcap[2], and the price of renting Ethash mining power from NiceHash[21] at the time of the attack 07/01/2019.

**Data of ETC attack (on 07/01/2019).** The ETC and BTC prices are \$5.32 and \$4061.47, respectively. The ETC difficulty is 131.80E+12. Parameter  $h_2$  is 1.16. Each block contains 4 coins in ETC. The Nicehash price is 3.8290 BTC/TH/day.

**Table 7: Summary of blockchains sharing the same mining algorithm. “Portion” represents the ratio of a blockchain with more mining power over the other blockchain, where the blockchain with more mining power is the first row of each mining algorithm, and all other rows of the same mining algorithm from the other chain. For a chain with more mining power, “Top Miners” represents the percentage of mining power that the top mining pools control in this chain. For the chains with less mining power, “Top Miners” show the ratio between a top miner’s mining power and the blockchain’s total mining power. For example, the top 1 mining pool in ETH controls 27.7% mining power, and this amount of mining power about 4.563 times of the total mining power in the entire ETC network.**

Type	Mining Algorithm	Coin	Rank	Hashrate (h/s)	Portion	Top Miners		
						#1	#2	#3
ASIC-resistant	Ethash	Ethereum (ETH)	3	1.42E+14	N/A	27.7%	22.2%	12.5%
		EthereumClassic (ETC)	18	8.62E+12	1647.4%	456.3%	365.7%	205.9%
	CryptoNight	Monero (XMR)	14	9.29E+08	N/A	37%	26%	12%
		ByteCoin (BCN)	39	3.35E+08	277.3%	102.6%	72.1%	33.3%
	Equihash	Zcash (ZEC)	20	3.36E+09	N/A	33.4%	19.2%	17.8%
		BitcoinGold (BTG)	26	3.17E+06	111111.1%	37111.1%	21333.3%	19777.8%
		Komodo (KMD)	55	4.48E+07	7518.8%	2511.3%	1443.6%	1338.3%
		Aion (AION)	84	7.22E+05	1000000.0%	334000.0%	192000.0%	178000.0%
ASIC-friendly	Sha256d	Bitcoin (BTC)	1	4.00E+19	N/A	23%	16.4%	11.6%
		BitcoinCash (BCH)	4	1.44E+18	2777.8%	638.8%	455.6%	322.2%
	Scrypt	Dogecoin (DOGE)	23	3.76E+14	N/A	18.0%	16.0%	10.0%
		Litecoin (LTC)	8	2.77E+14	135.7%	24.4%	21.7%	13.6%
	X11	Dash (DASH)	15	2.32E+15	N/A	13.0%	11.0%	11.0%
		WaltonChain (WTC)	73	1.14E+15	203.5%	26.5%	22.4%	22.4%

**Table 8: Data of BTC/BCH, ETH/ETC and XMR/BCN for experiments.**

**(a) BTC and BCH**

	BTC	BCH
Difficulty	6071846049920.0	199070336984
Price (USD)	3585.99	126.31
Algorithm	Sha256d	Sha256d
Hashrate(h/s)	39997.52E+15	1444.26E+15
Coins per Block	12.5	12.5

**(b) ETH and ETC**

	ETH	ETC
Difficulty	1.91E+15	122025268093982
Price (USD)	118.53	4.26
Algorithm	Ethash	Ethash
Hashrate (h/s)	142.00E+12	8.62E+12
Coins per Block	2	4

**(c) XMR and BCN**

	XMR	BCN
Difficulty	113361254717.0	40879087965
Price (USD)	43.64	0.000619
Algorithm	CryptoNight	CryptoNight
Hashrate (h/s)	9.29E+08	3.35E+08
Coins per Block	3.075	987.26